

# FUB 30

## Complete unit for fit-up of sections

- The Fit-up Bed (FUB) is purposely designed and robustly built to withstand the rugged environment in the welding industry.
- The fastest system to assemble 1+1 sections.
- One set of FUB consist of one power and one idler roller bed 30T, four independently adjusted rollers to align the two sections with each other.
- The roller bed and the rollers are all mounted on one main frame.



### Applications

- **Vessels**
- **Wind Tower**
- **Pipe Mill**



## Technical data

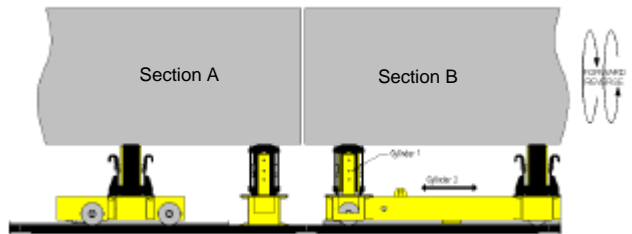
Max load, tons	30
Min diameter, mm	610 (at 90° included angle)
Max diameter, mm	6435 (at 30° included angle)
Tyre type	Steel rollers with Polyurethane
Roller speed, mm/min	130-1295
Control voltage, V DC	24 V DC
Supply voltage	400V-3Ph-50Hz 460V-3Ph-60Hz
Roller drive control, kW AC	2.2 (Inverter)
Control	Pendant with push buttons
Travel car speed, mm/min	238-2380
Stroke length Section A, mm	150 mm
Stroke length Section B, mm	250 mm
Net weight, kg	5250

## Ordering Information

FUB 30

0370 250 931

Please contact nearest ESAB sales office for more information.



[www.esab.com](http://www.esab.com)

