

# LLP-200, LLP-500, LLP-750, LLP-1000

## Two axis positioner

**Two-axis positioners LLP-200, LLP-500, LLP-750 and LLP-1000 are part of ESAB Low Load Positioning Equipment (LLPE). They are ideal for rotating and tilting lightweight workpieces.**

- The speed is stepless adjustable.
- These lightweight positioners are built to meet international EN safety requirements.
- The LLP positioners come with a low-voltage foot pedal with Start/Stop function. For daily work, these positioners offer perfect solutions.
- The LLP positioners have 2-axis.
- The LLP-200 has manual tilting adjustment while the LLP-500, LLP-750 and LLP-1000 have motorised tilting.
- Thus, the 2-axis operation guarantees the ideal ergonomic working position.
- Mechanically and electrically the positioners have been designed for easier maintenance and a small number of spare parts as well.



### Applications

- Pipe shops
- Repair

## Technical data

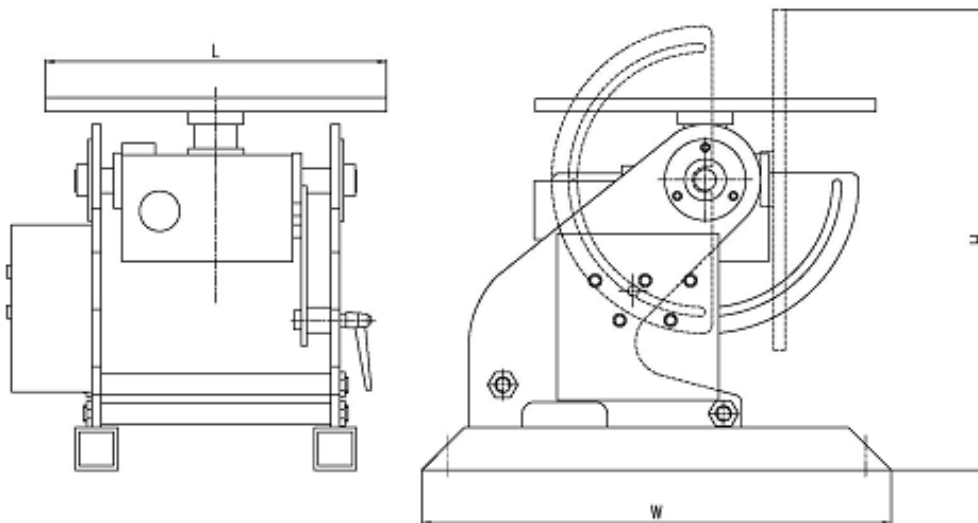
Model	LLP-200	LLP-500	LLP-750	LLP-1000
Max loading capacity (turning), kg	200	500	750	1000
Max loading capacity (tilting), kg	200	500	750	1000
Rotation speed, rpm	0.6 - 6	0.2 - 2	0.09 - 0,9	0.09 - 0,9
Tilt range, degree	0 - 90	-45 - 90	-45 - 90	-45 - 90
Incoming supply (50Hz/1-phase), V	220	220	-	-
Incoming supply (50Hz/3-phase), V	-	-	380	380
Control voltage, V AC	24	24	24	24
Rotation drive motor, W	0.065	150	550	750
Earthing, A	300	300	600	600
Table plate diameter, mm	400	620	900	900
Dimensions LxWxH, mm	400x550x540	620x680x817	900x1100x1230	900x1140x1390
Cable length, foot pedal, m	3	3	3	3

## Ordering information

LLP-200	0370 250 202
LLP-500	0370 250 203
LLP-750	0370 250 204
LLP-1000	0370 250 205

## Option

3-claw chuck	0370 250 209
--------------	--------------



2011-03-25 / ESAB reserves the right to alter specification without prior notice.



[www.esab.com](http://www.esab.com)

