

WeldPoint™

*The ultimate supervisor system
which brings the shop floor to the production office*

WeldPoint™ is a PC based tool to handle a multitude of administration and monitoring tasks for ESAB welding systems connected to a Local Area Network (LAN) by a TCP/IP address.

Weldpoint™ also enables data to be uploaded or downloaded to or from the computer by a USB memory stick as an alternative for applications that do not require the continuous communication possibilities presented by LAN connection.

Views

WeldPoint™ consists of 7 views. Each view is responsible for particular tasks.

Main view is responsible for establishing connection (s) with the welding system (weld data unit's).

Get files from weld data unit downloads the files from the welding system.

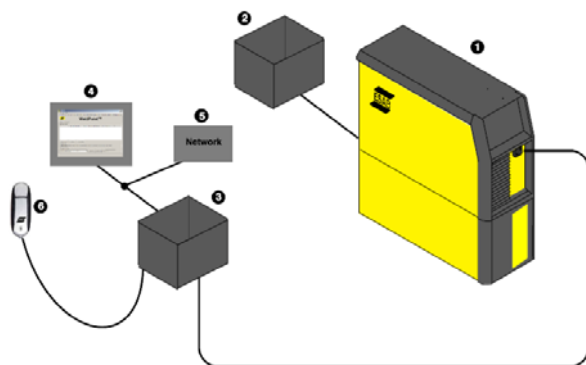
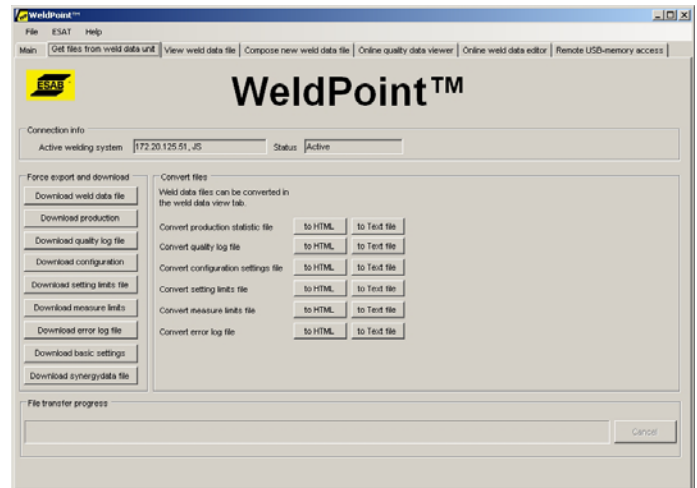
View weld data helps the user to view the content of the weld data file.

Compose new weld data will be used to combine two weld data's to create a new weld data.

Online quality data viewer will help the user to receive quality data in real-time.

Online weld data editor will support editing of setting data online.

Remote USB-memory access support up and downloading of files to/from the connected weld data unit.



- | | |
|-------------------------|--------------------------|
| 1. Welding power source | 4. Administration |
| 2. Wire feed | 5. Connection to network |
| 3. Weld data unit | 6. USB-memory |



- Connect up to 10 power sources to one supervisory system
- Save weld schedules, production statistics, quality log, configuration settings and default settings as XML files from a connected welding system
- Convert XML files to HTML or text file format (for Excel import)
- Compose new weld data files simply by utilising data from other weld data files
- Transfer weld data to the different welding systems connected to the supervisory system
- Monitor quality data from the welding system in real-time
- Select automatic or manual update of quality data
- Parameter editor makes it possible to change parameters in the weld data sets while the power source is "online"
- Monitor the parameters from one weld data set while editing another simultaneously



Aristo™ W8₂ Fieldbus

Aristo™ W8₂ Fieldbus are the interfaces between the control unit **Aristo™ U8₂** and **WeldPoint™** for continuous up and download of data.

The **Aristo™ W8₂ Fieldbus** units are delivered incl **WeldPoint™** item no 0462045880.



Aristo™ W8₂ Integrated

Aristo™ W8₂ Integrated is the interface between the **Aristo™** welding system and ABB's robot controller IRC5 with all operation executed from the robot's operator pendant. Access to **WeldPoint™** via the LAN.



Aristo™ U8₂

Aristo™ U8₂ control unit is the key to a fully integrated welding system. Full USB connectivity and a choice of advanced **Aristo™ W8₂** add-on modules for continuous communication of data to/from **WeldPoint™**.

Ordering information

WeldPoint™

0462 045 880

Delivery content : CD incl English user manual

Unrivalled service and support

Our commitment and ability to deliver the expected service and support starts immediately after the order is confirmed. We endeavour to offer our customers an After Sales service, which is second to none. A strong and skilful service organisation is prepared to offer service and maintenance, calibration, validation and upgrading of equipment and software.

The service organisation will offer standardised solutions for the reconditioning or modification of existing products.

Spare and wear parts are manufactured according to ESAB's quality plan. Exchange Printed Circuit Board (PCB), exchange modules and components are available for all our products in order to reduce downtime to an absolute minimum. ESAB is continuously upgrading authorised service partners for local service support. Customers who have their own service and maintenance personnel will always be offered a service-training package as part of a total ESAB offering. However, product and process training for end-users will form an additional part of the ESAB offering. Always ask your ESAB sales representative or distributor for a complete ESAB solution.

2009-07-22 / ESAB reserves the right to alter specifications without prior notice



ESAB AB
 Box 8004
 SE-402 77 GÖTEBORG SWEDEN
 Phone: +46 31 50 90 00 Fax +46 31 22 04 49
 E-mail: info@esab.se
 www.esab.com

